



STRAND
ASSOCIATES®



Excellence in Engineering Since 1946

Strand Associates, Inc.® (SAI)

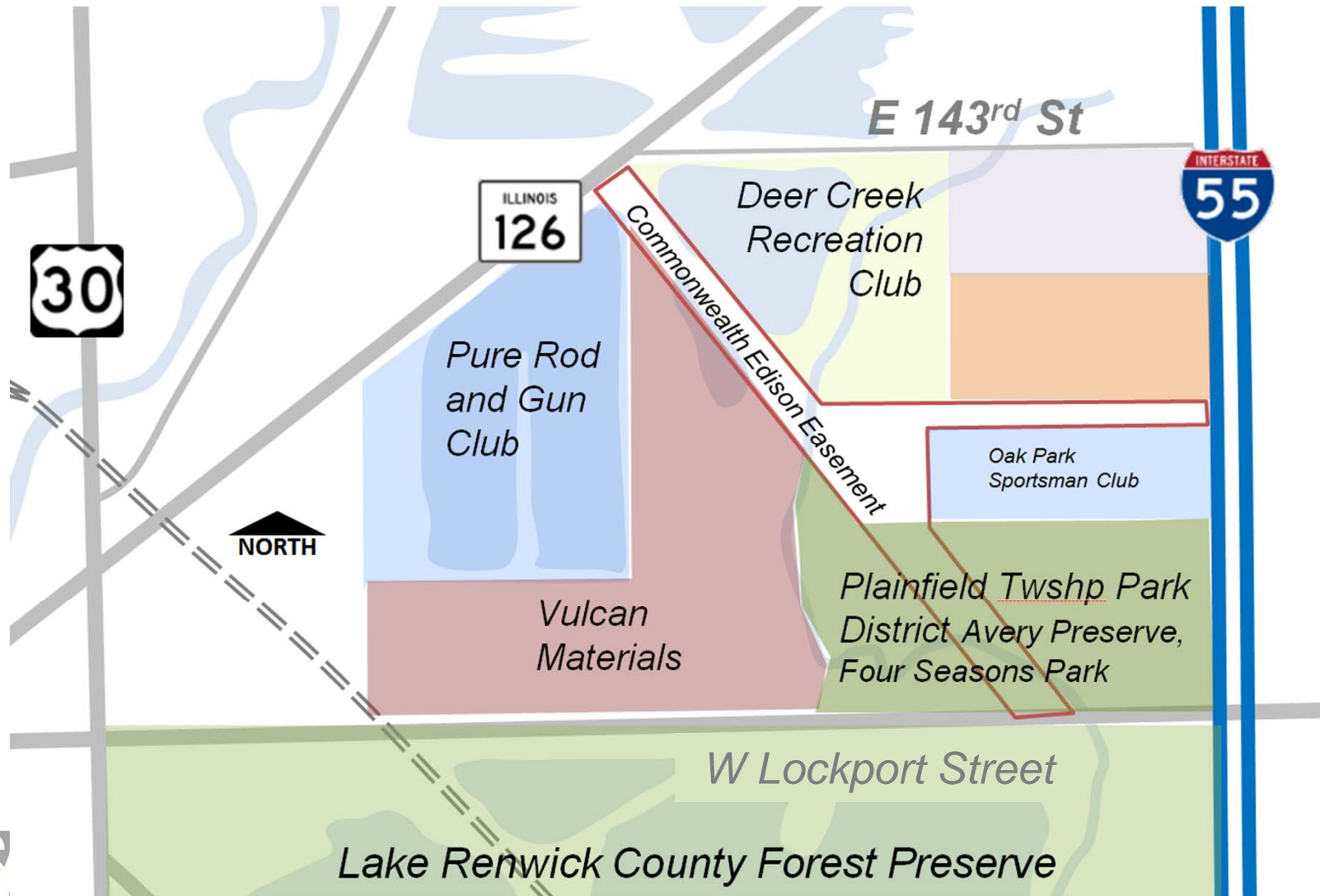
Lockport Bypass Corridor Report Presentation

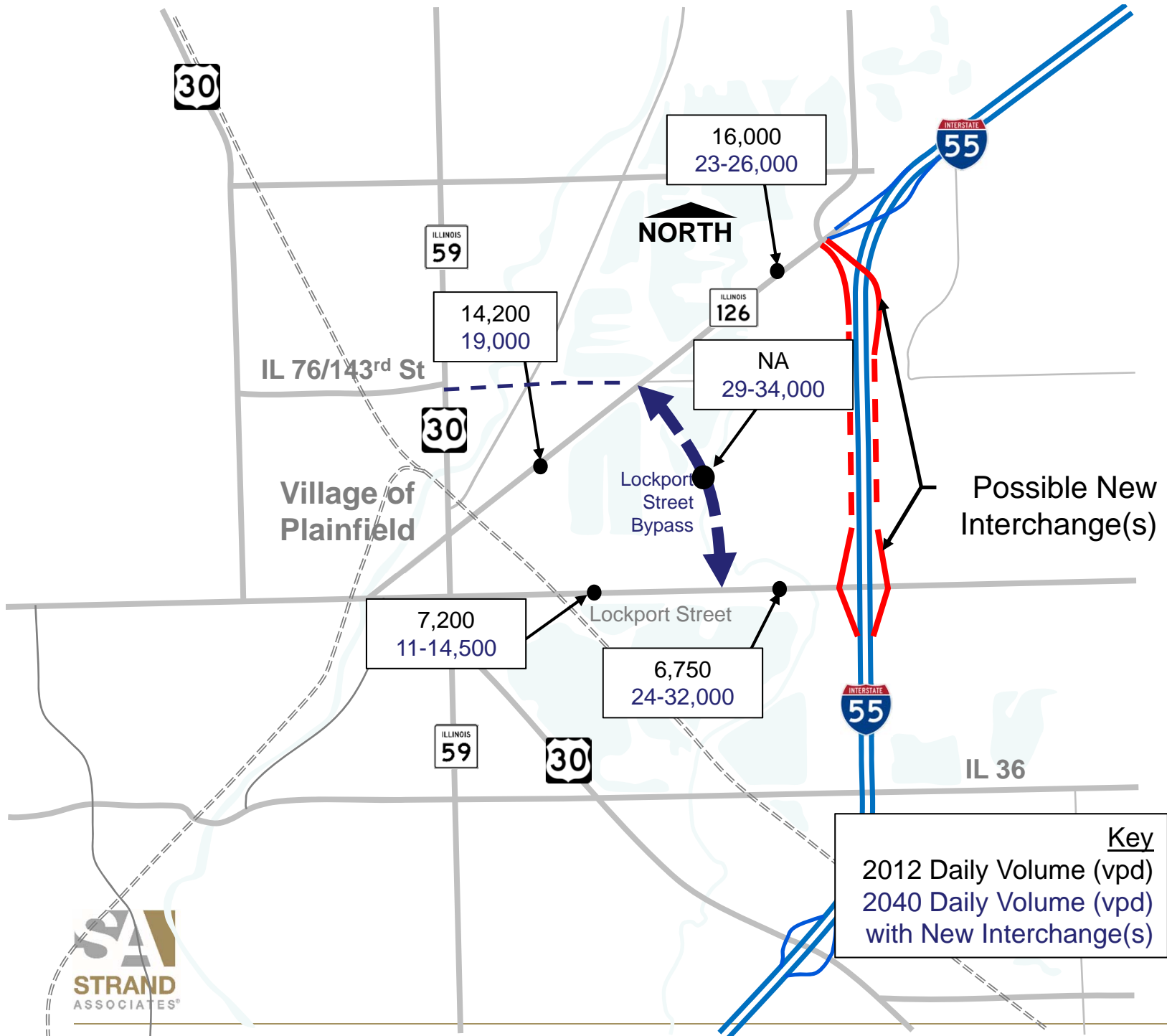
June 22, 2015

Village of Plainfield

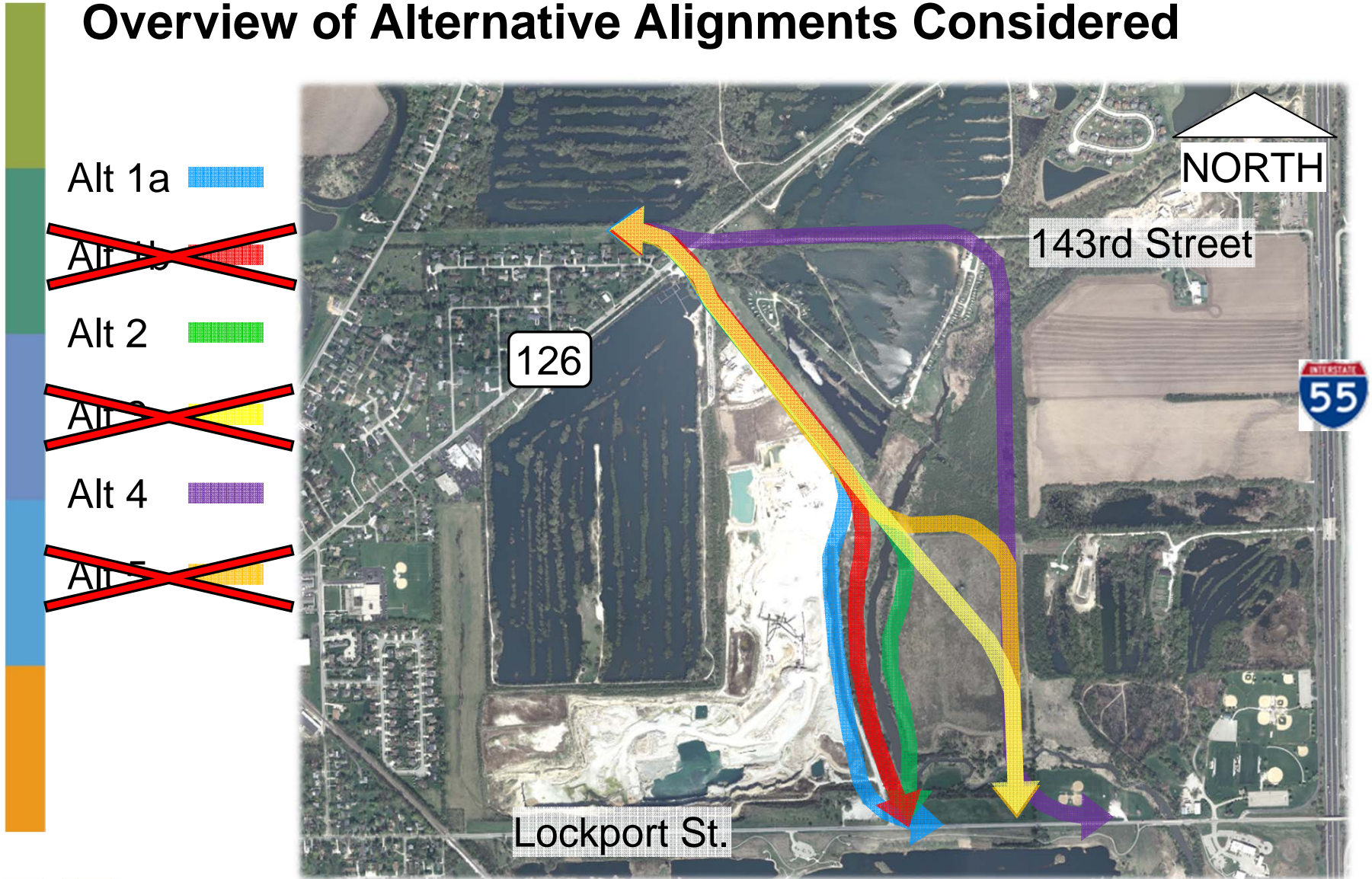


Property Owners



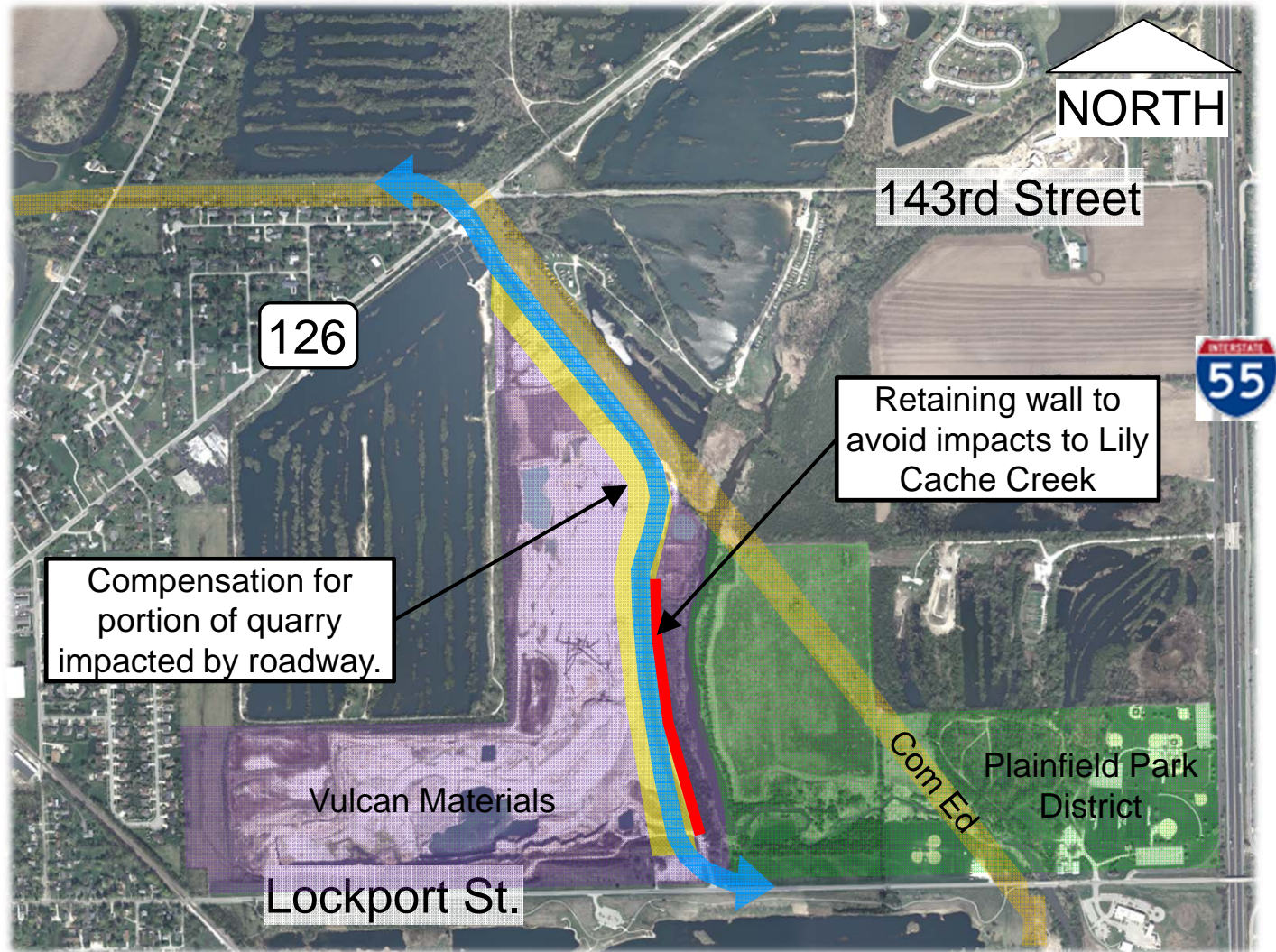


Overview of Alternative Alignments Considered

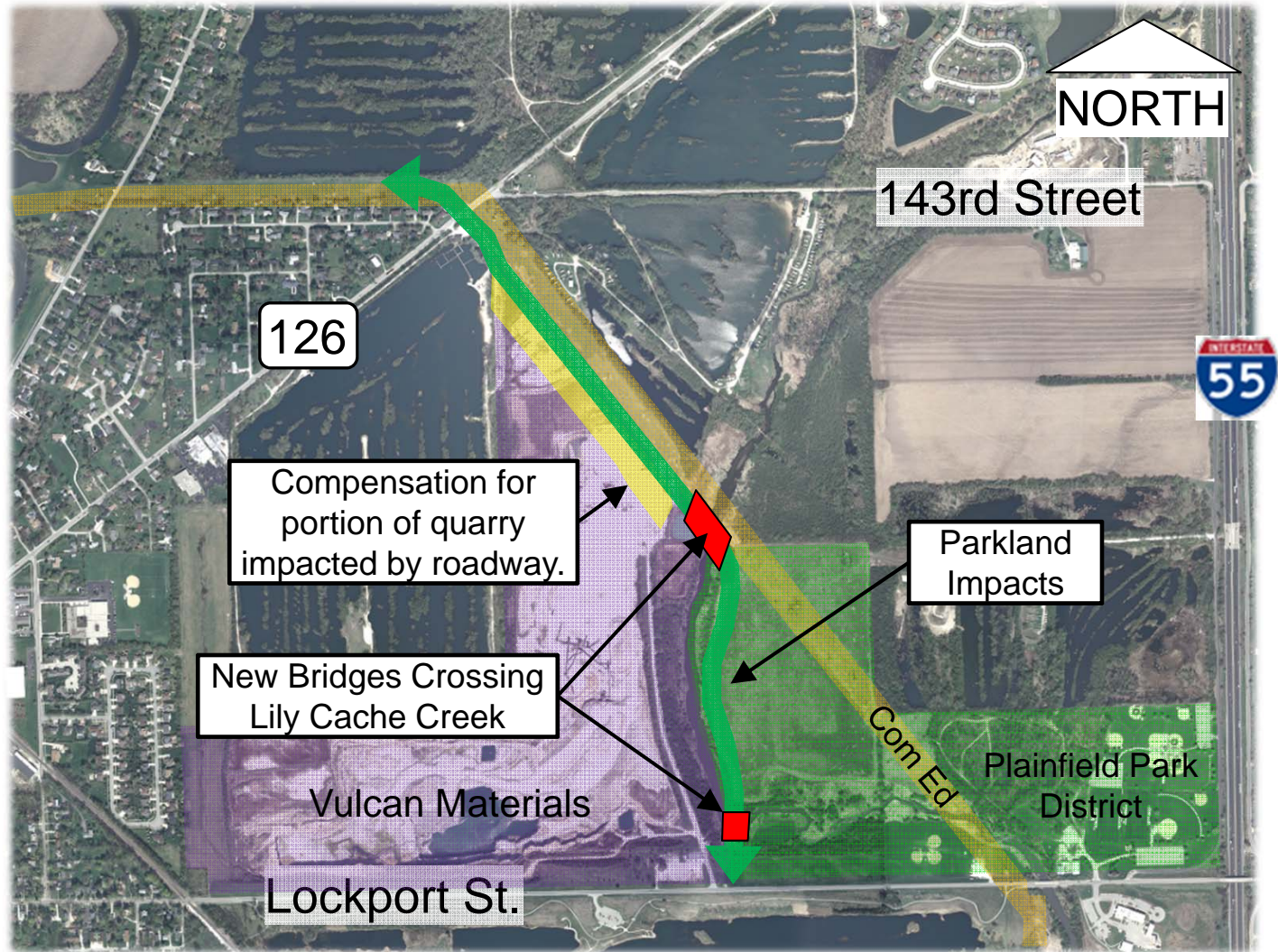


~~X~~ = DISMISSED ALTS

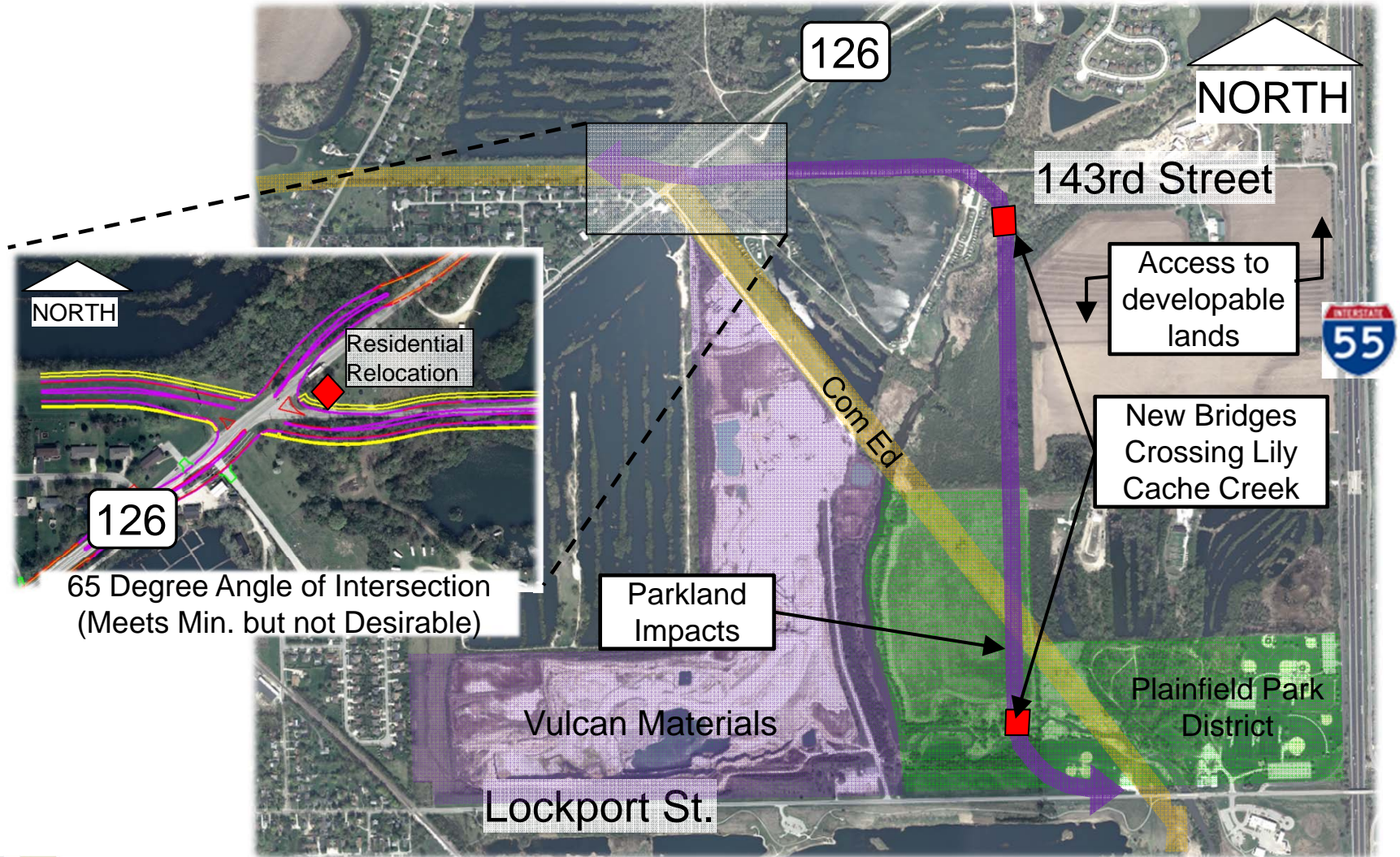
Alternative 1A Overview



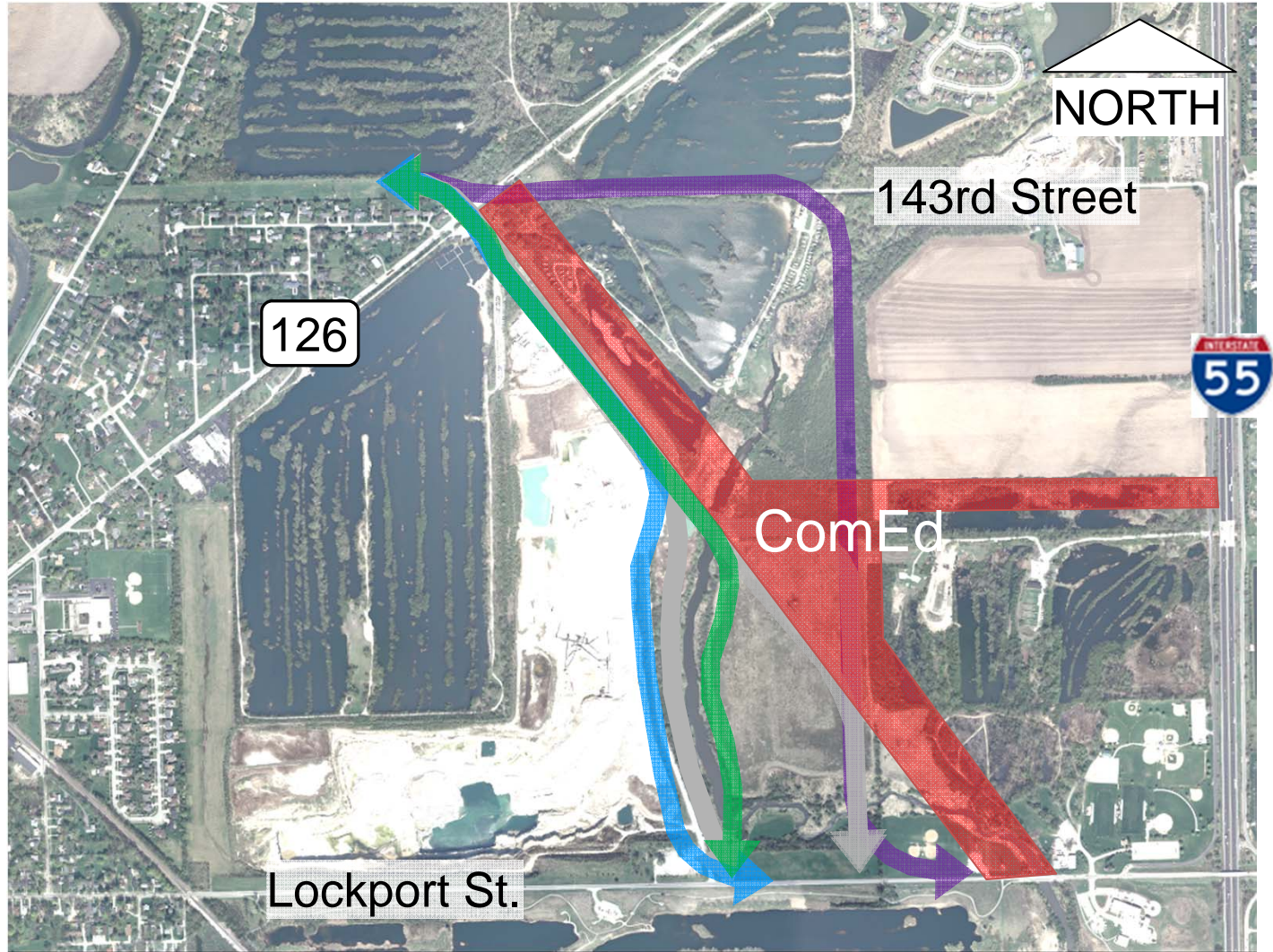
Alternative 2 Overview



Alternative 4 Overview

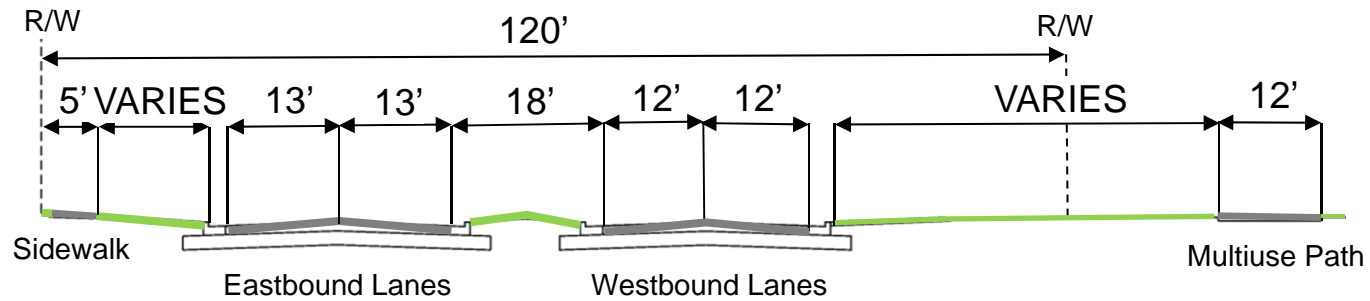


Three Alternatives Investigated Further

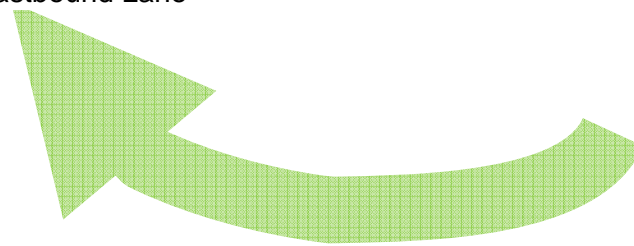
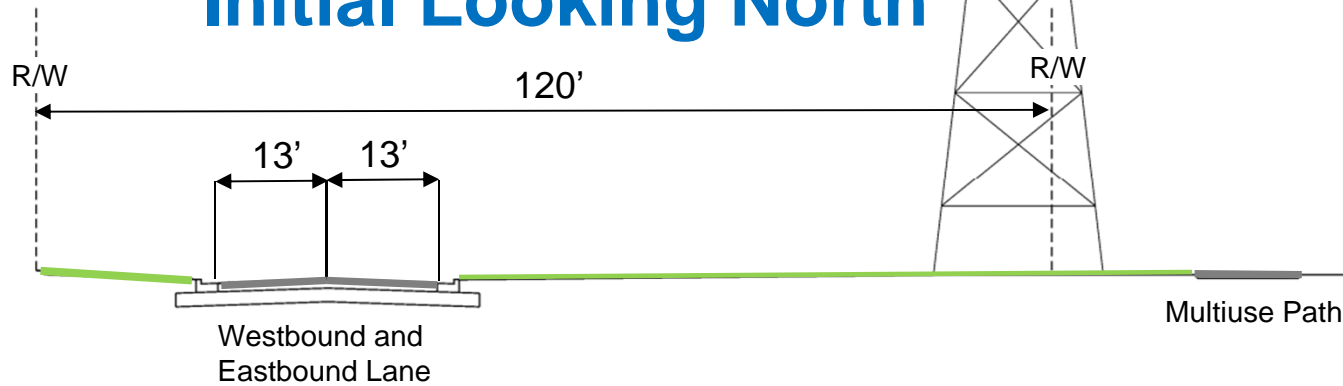


Proposed Cross Section

Ultimate Looking North

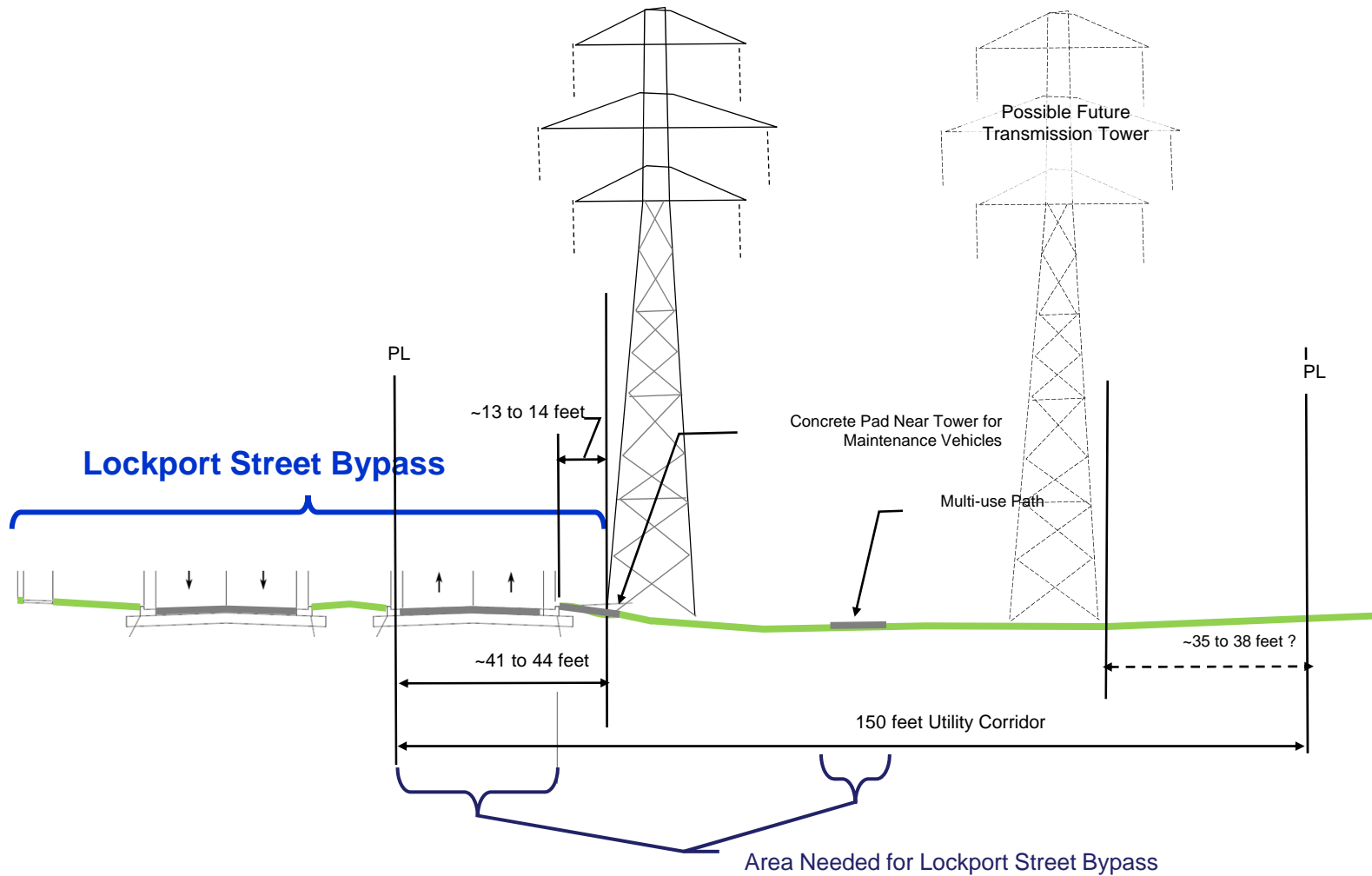


Initial Looking North



ComEd request to build west-most lanes first

Alternative 1A and 2 Relationship to ComEd Corridor



Costs (in Millions)

Alternative	As a 4-In	As a 2-In
Alternative 1A– On Vulcan Materials Quarry Access Roadway	\$15.1 to \$16.0*	\$12.3 to \$13.2*
Alternative 2– West Side of Park	\$15.4 to \$15.8*	\$13.0 to \$13.3*
Alternative 4– 143rd Street and Center of Park	\$16.0	\$12.2

*Range is due to potential variance in quarry material prices

*Ultimately the services of an appraiser should be enlisted to better understand right of way costs

Impacts

Alternative	Right-of-way (Acres)			Impacts			
	Overall	Wet-lands	Parks	Reloca-tions	R/W Parcels	ComEd Towers	Stream Crossings
Alternative 1A– On Vulcan Materials Quarry Access Roadway	18.8	0.00	0.7	0	11	0	1
Alternative 2– West Side of Park	18.5	1.84	7.6	0	11	0	3
Alternative 4– 143rd Street and Center of Park	19.8	2.90	8.1	1	12	1	3

Special federal protections apply to wetlands, parks, and stream crossings.



“No practicable alternative” applies

Alternative 1A is Recommended Because:

- It appears to be low cost alternative
- Requires little parkland and has minimal impacts to parkland
- Has minimal wetland impacts
- Likely to have less encroachment into floodplains

